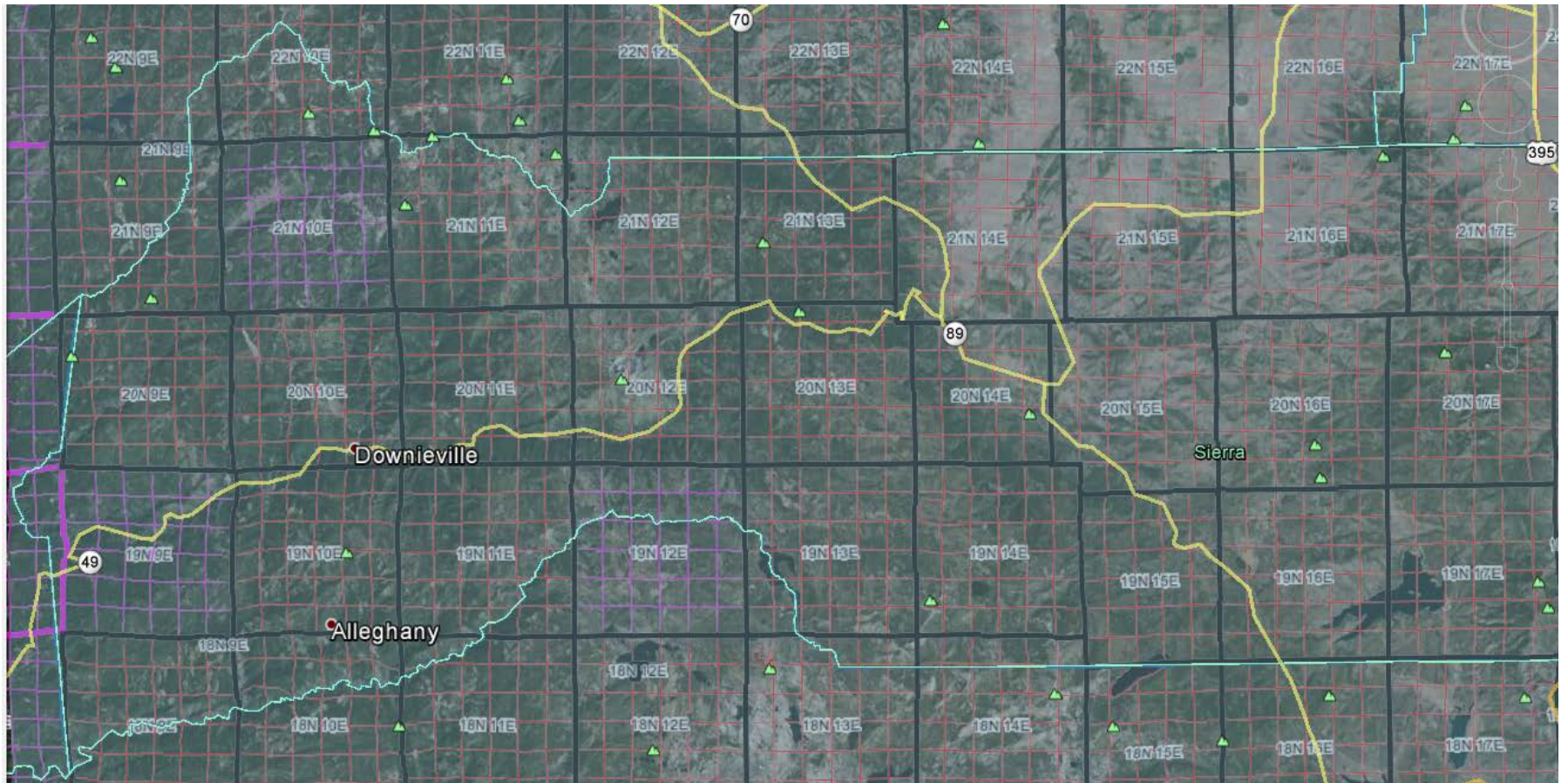


This permit is for a regional general permit. You need to provide site specific information for you particular claim. So substitute your claim overlay with specific MTRS data. For site conditions you could use a picture or the drawings.

# Sierra County, California

Permit is requested for small scale mineral sampling in all areas open to mineral entry.



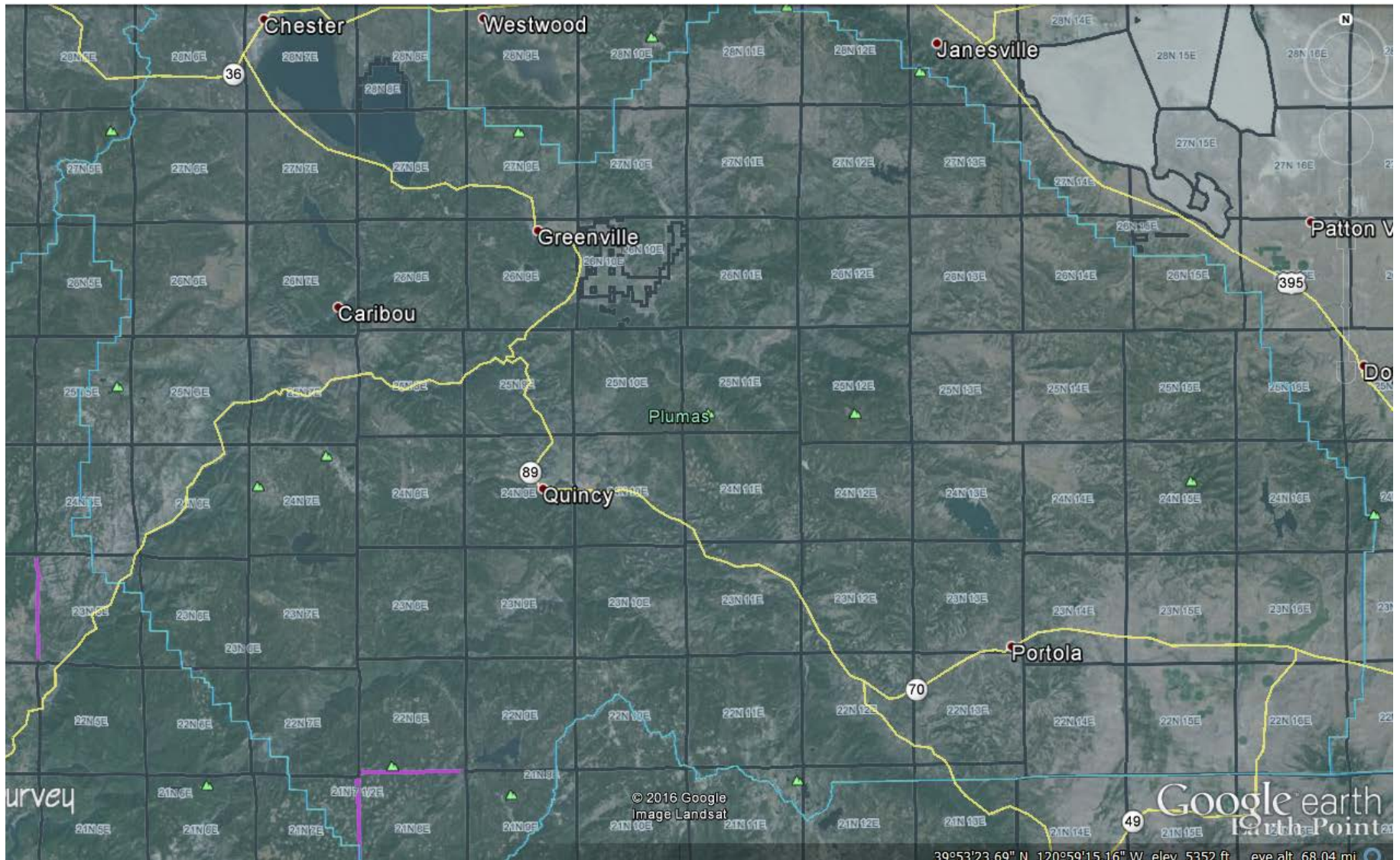
Blue line is boundary of Sierra County

**NWS PERMIT – 18: Minor Discharges**  
**Permit Title: Small Scale Mineral Sampling**  
Sierra County, California  
Townships Permit is Requested For:

22N	9E, 10E
21N	9E, 10E, 11E, 12E, 13E, 14E, 15E, 16E, 17E, 18E
20N	9E, 10E, 11E, 12E, 13E, 14E, 15E, 16E, 17E, 18E
19N	9E, 10E, 11E, 12E, 13E, 14E, 15E, 16E, 17E, 18E
18N	9E, 10E, 11E, 13E, 14E

# Plumas County, California

Permit is requested for small scale mineral sampling in all areas open to mineral entry.



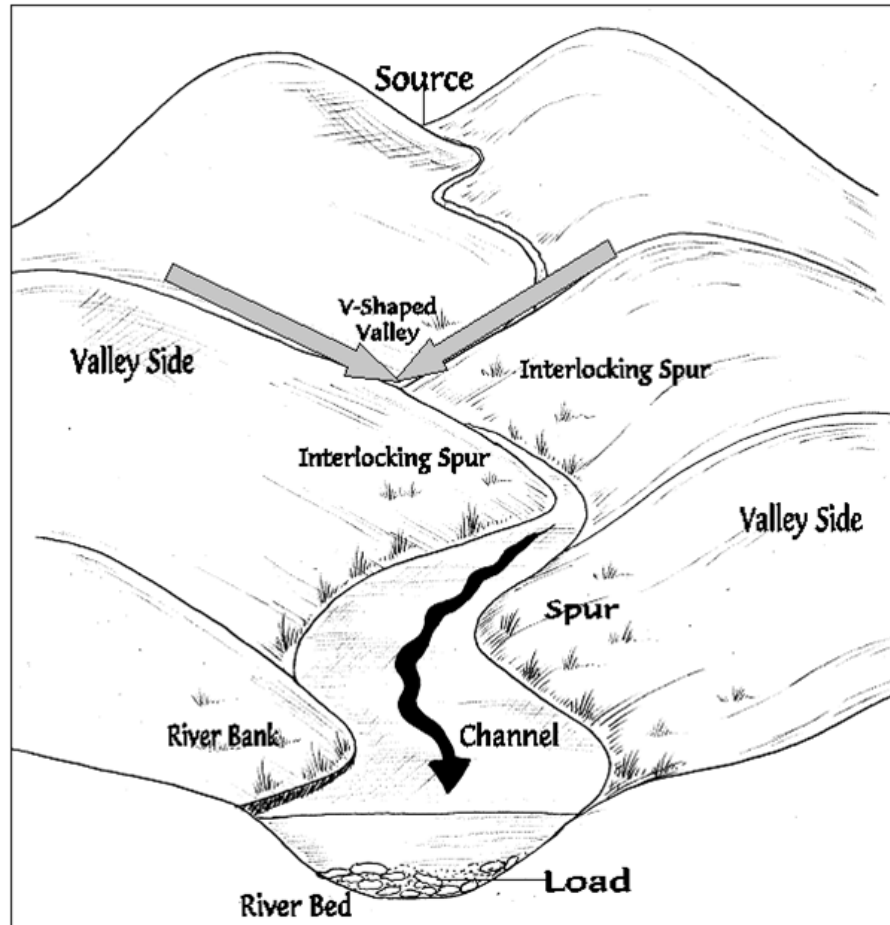
**NWS PERMIT – 19: Minor Discharges**  
**Permit Title: Small Scale Mineral Sampling**  
Plumas County, California  
Townships Permit is Requested For:

30N	5E, 6E, 7E, 8E
29N	5E, 6E, 7E, 8E
28N	6E, 7E, 8E
27N	5E, 6E, 7E, 8E, 9E, 10E, 11E, 12E, 13E, 14E
26N	5E, 6E, 7E, 8E, 9E, 10E, 11E, 12E, 13E, 14E, 15E, 16E
25N	5E, 6E, 7E, 8E, 9E, 10E, 11E, 12E, 13E, 14E, 15E, 16E
24N	5E, 6E, 7E, 8E, 9E, 10E, 11E, 12E, 13E, 14E, 15E, 16E, 17E
23N	5E, 6E, 7E, 8E, 9E, 10E, 11E, 12E, 13E, 14E, 15E, 16E, 17E
22N	6E, 7E, 8E, 9E, 10E, 11E, 12E, 13E, 14E, 15E, 16E, 17E
21N	7E, 8E, 9E, 11E, 12E, 13E

## DRAWINGS

## Overlay of Site Conditions

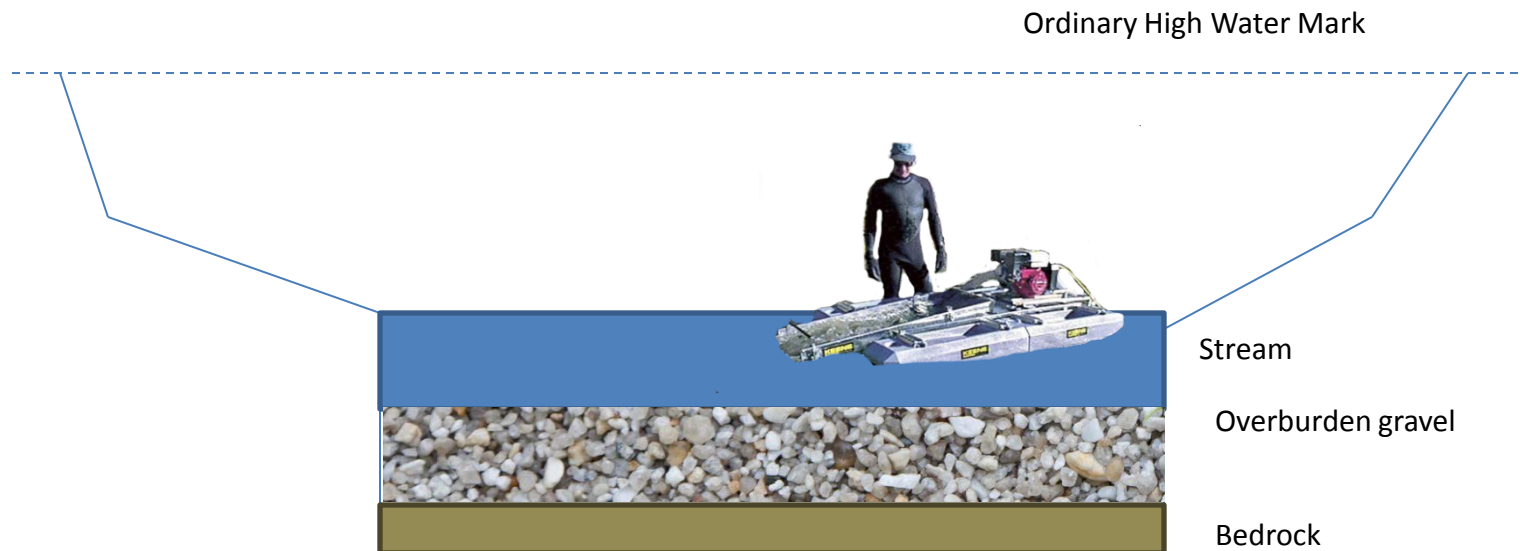
Sampling and prospecting will take place in mountain canyons where the below illustration provides a typical overlay. The banks of areas to be prospected and sampled are typically rock or bedrock with interspersed vegetation. Riparian vegetation will not be disturbed during the permitted activities. All activities will be below the ordinary high water mark of the channel. No activity will take place outside the channel.



## EXISTING AND PROPOSED SITE CONDITIONS

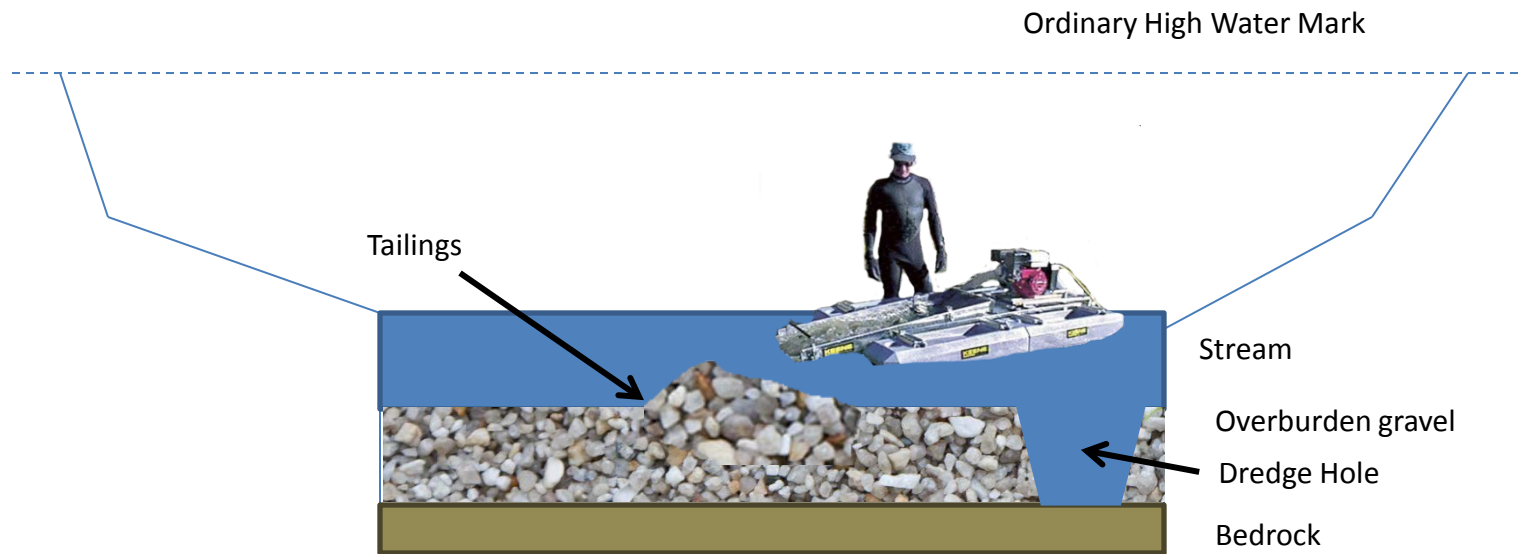
There will be no change to the stream with the exception of small dredge holes in the overburden of the river and small tailings piles. These holes and tailing piles will be re-leveled after the next significant flood.

### CROSS SECTIONAL VIEW -BEFORE





# CROSS SECTIONAL VIEW AFTER



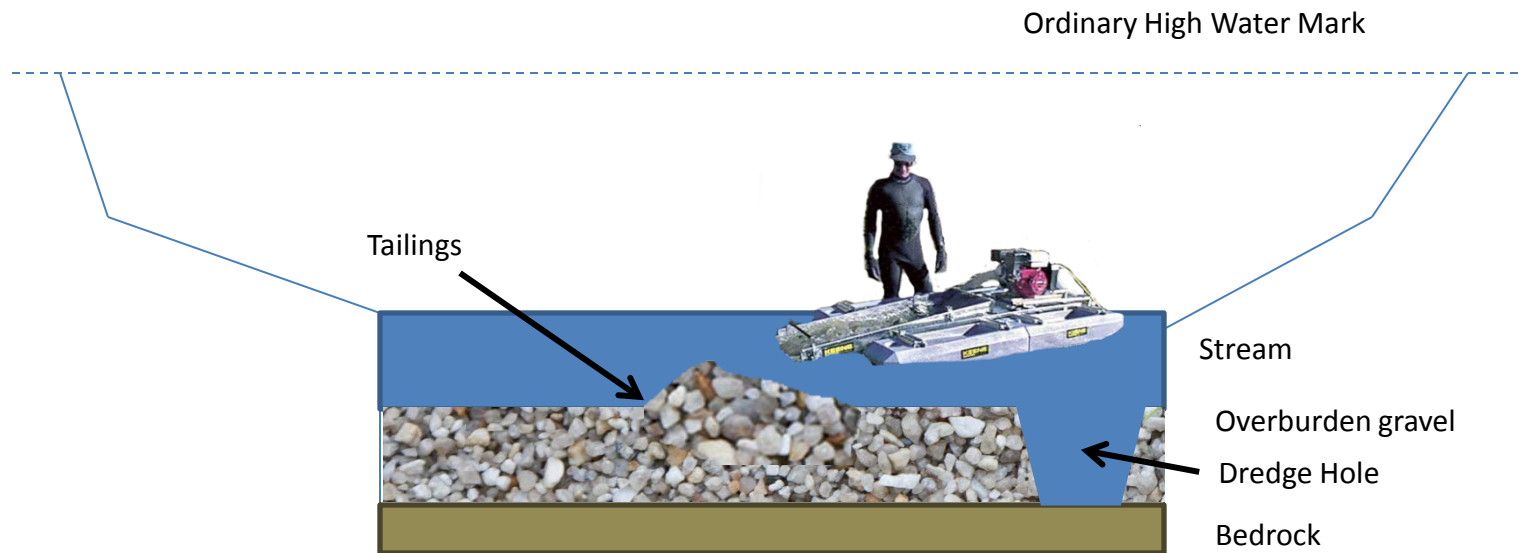
## PLAN VIEW DRAWINGS

The plan includes dredging in areas open to mineral entry in Sierra and Plumas County on federal land and in waters of the U.S. Numerous locations will be sampled and prospected using a suction dredge to remove overburden to reach the bedrock and sample the bedrock for gold and platinum or other valuable minerals.

The location of the dredging is on numerous rivers, streams and gullies as described in Attachment 1.

- Total dredge discharge under NWS -18 will not Exceed 10 cubic yards.
- Total dredge discharge under NWS -19 will not exceed 25 cubic yards.
- Total mining activity under NWS -44 will not exceed 300 linear feet without prior consultation and waiver.

## CROSS SECTIONAL DRAWINGS

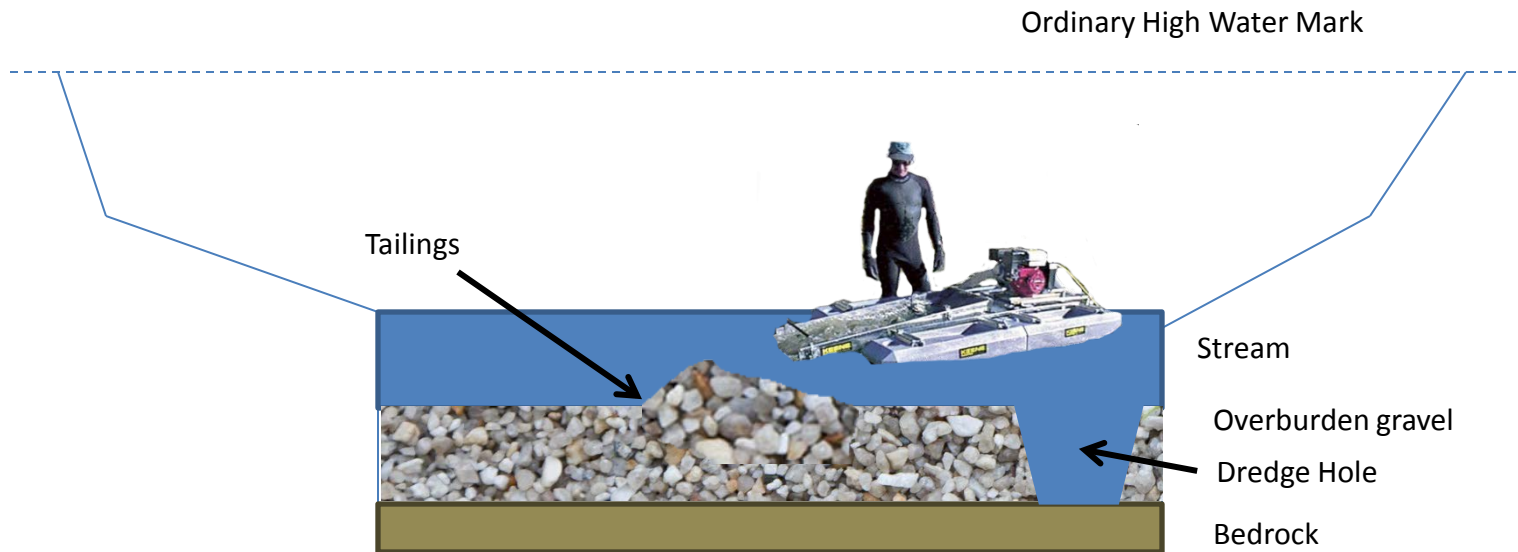


Dredge area is approximately 4' in width and 2' in depth.

Tailings will be approximately 12" to 18" high by 2' in length and 2' in width.

## SUPPLEMENTAL DRAWINGS

1. All work to be done within the water and below the boundaries of the ordinary high water mark.
2. Length along shoreline: N/A
3. Vegetation: No aquatic vegetation. Riparian vegetation will not be disturbed
4. Existing Water Depth in Stream Channel varies, but approximately 1' – 3'
5. Proposed Water Depth: Doesn't change in stream channel. Dredge hole may be up to 2' in depth, but will be filled back in on streams without sufficient winter flushing flows.



Dredge area is approximately 4' in width and 2' in depth.

Tailings will be approximately 12" to 18" high by 2' in length and 2' in width.